



St. Patrick Church

Parish Finance Update
As of January 31, 2013

St. Patrick Church Parish Update

- The first half of the church fiscal year
 - Accomplishments
 - Income & Expenses
 - Progress against goals
 - Bishops Appeal

St. Patrick Church Parish Update

First half of the church fiscal year

- We held a highly successful golf tournament which was well attended and thoroughly enjoyed by the parish community.
 - Net Proceeds to the church totaled \$31,000
- Generous contributions towards our Diocesan debt has enabled us to keep debt from growing .
 - we will be making an \$8,000 payment this month
- Special thanks to Eric Lazo-Wasem , Ray McGowan and their helpers for refinishing the front entrance doors of the church.
- We completed the church steeple lighting project paid for by a generous donation from one of our parishioners.
- Joe Murphy's Eagle Scout project to build a handicap ramp for Conlisk Hall is nearly complete.
 - Paid for by parish contributions, and donations from Ring's End Lumber and Devine Brothers
- Launched a new Website and on-line giving program – special thanks to Paul Webel for leading this effort.

St. Patrick Church Parish Update

Income and Expenses

- For the first seven months we received income of \$285,000 and incurred expenses of \$255,000.
 - Excluding expenses associated with fund raisers, our Average Monthly Operating Expense was \$32,000/month which is equal to \$52/week per active church family.
 - Our Average Monthly Offertory and Religious Education Income was \$28,000/month
 - A successful Golf Tournament combined with a few generous individual gifts from parishioners offset what would have been a \$3,700/month operating shortfall.
- Overall Income was slightly better than our parish budget
 - Offertory Income was 3% better than plan but below our weekly goal.
 - Average weekly offerings are \$4500/week vs. a goal of \$6200/week.
 - The goal of \$6200/week is designed to meet all operating needs and reduce our debt.
 - Income from fund raising plus individual gifts has allowed us reduce our diocesan debt by \$8,000 which will be paid this month.

St. Patrick Church Parish Update

Progress against 2012 – 2013 Goals

- Formation of a Parish Council to help and advise the Pastor.
 - We are in the initial planning stages.
 - Considering the right mix of people to implement a plan to grow the parish community.
- Establishment and growth of a Senior Youth Group.
 - Well attended Three Kings Breakfast
 - Started out strong with monthly events but needs more participants.
- Increase family involvement in the Religious Education Program and weekly mass attendance.
 - Beautiful Christmas Pageant performed by our 1st grade class
 - Well attended 5th grade Family Mass
 - Guest speaker – Bryan Mercier
 - Successful Coat Drive and Redding Food Pantry Thanksgiving Food Drive.
- Increase volunteers for Parish Ministries.
 - Strong Men's Prayer Group
 - Looking to increase our Liturgical Ministers:
 - Eucharistic Ministers, Altar Servers and Lectors
- Develop a plan for a new capital campaign to relieve debt to the diocese and to refurbish the old church.
 - Early planning stages and we hope that our new website and online giving capabilities will provide a new communication vehicle. .

St. Patrick Church Parish Update

2013 Capital Projects / Diocesan Debt

- We still have significant maintenance items including replacing leaking roof of the Parish hall.
 - We will use a portion of the proceeds from the Golf Tournament to complete this work in the spring.
- We are installing programmable zone sensor for the church HVAC system.
 - We expect to save 25% in heating and cooling costs
 - We are installing a generator for the church since the electricity for the church also controls the water supply for the rectory and Conlisk Hall.
 - We will use Maintenance fund contributions and fund raising proceeds for this project.
- We continue to work to repay our Diocesan debt.
 - Even though the new Church is paid off, we ask those parishioners that have outstanding pledges to continue to make those payments so that we can replenish our maintenance fund and retire our diocesan debt.
 - We have \$24,000 in valid pledges remaining to be paid.
- Once we meet our debt obligations, we will embark on other capital improvement programs including the old church building.

Bishops Appeal

- Our Annual Bishops Appeal Goal has been set at \$65,000
- This is our annual obligation to the Bridgeport Diocese
 - We thank those of you who made the contributions so far.
 - We need all parishioners to prayerfully consider their contribution this year and to make your commitment as soon as possible.
 - Commitments need to be submitted by June and payments completed by December.

St. Patrick Church Parish Update

Concluding Remarks

- Your generosity and gifts of time, talent and prayer continue to make our Parish vibrant.
- We ask you to continue to be as generous as possible. We thank you for your gifts.

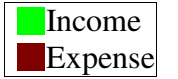
What we really need is to work to increase our parish participation rate. Of more than 500 families, only 170 are active on a weekly basis.

- *Talk with your friends and neighbors, bring them back to church*
- *If there are issues or concerns, Fr. Joe is available to discuss them.*

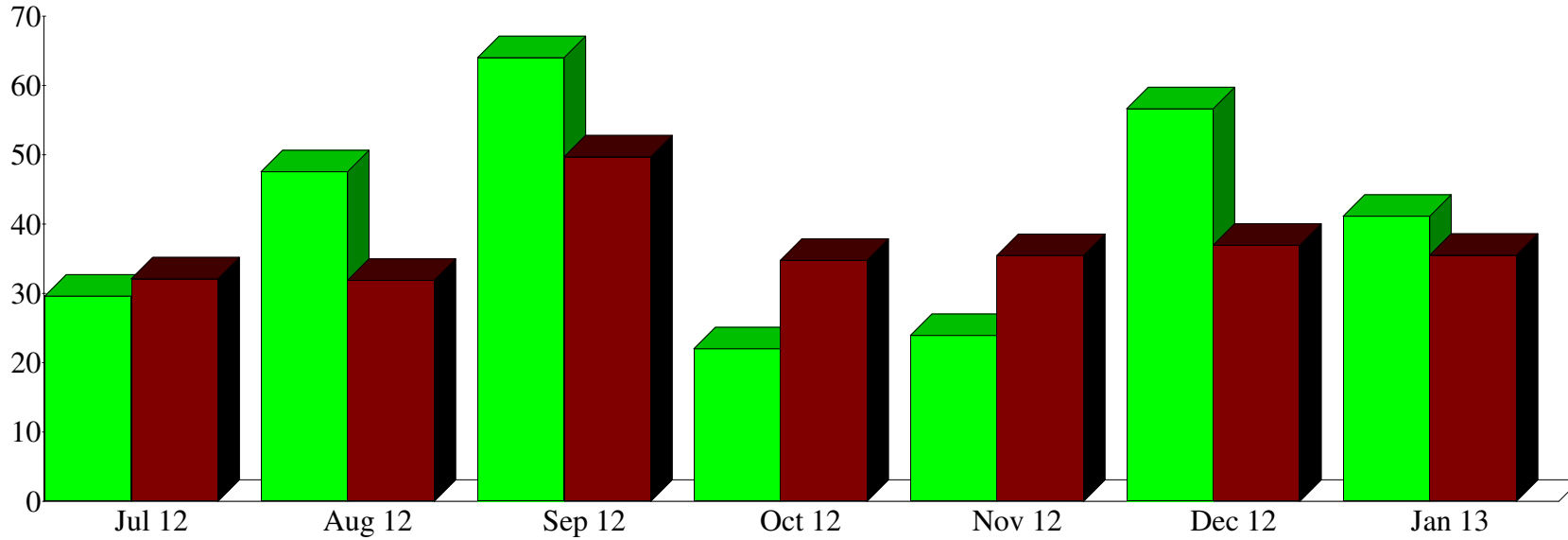
- We welcome your thoughts and ideas on how we can continue to build our parish community

Thank you and may God Bless you
and our Parish Family.

Income and Expense by Month
July 2012 through January 2013

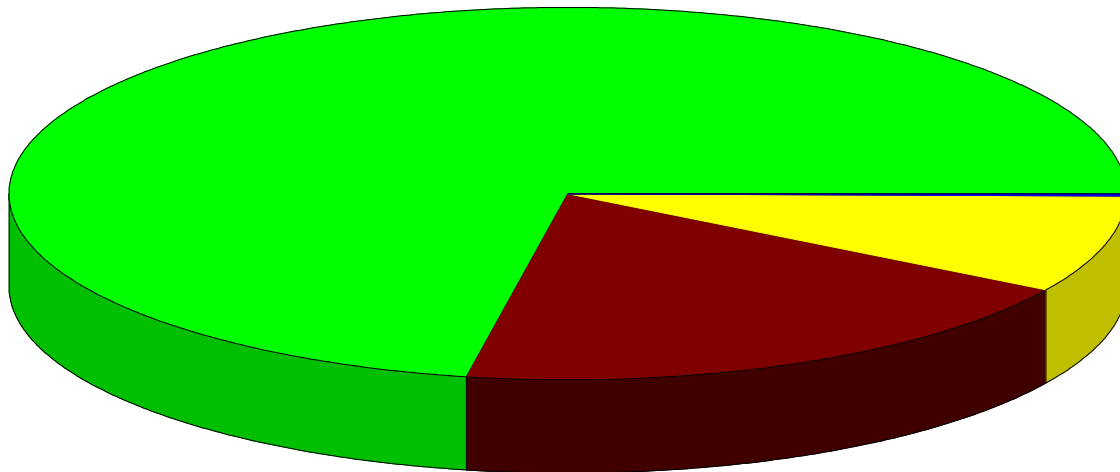


\$ in 1,000's



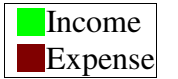
Income Summary
July 2012 through January 2013

Offertory & Misc Revenue	%72.13
Fund Raising Activities	19.31
Religious Education	8.56
General & Administrative	0.01
Total	\$285,041.45

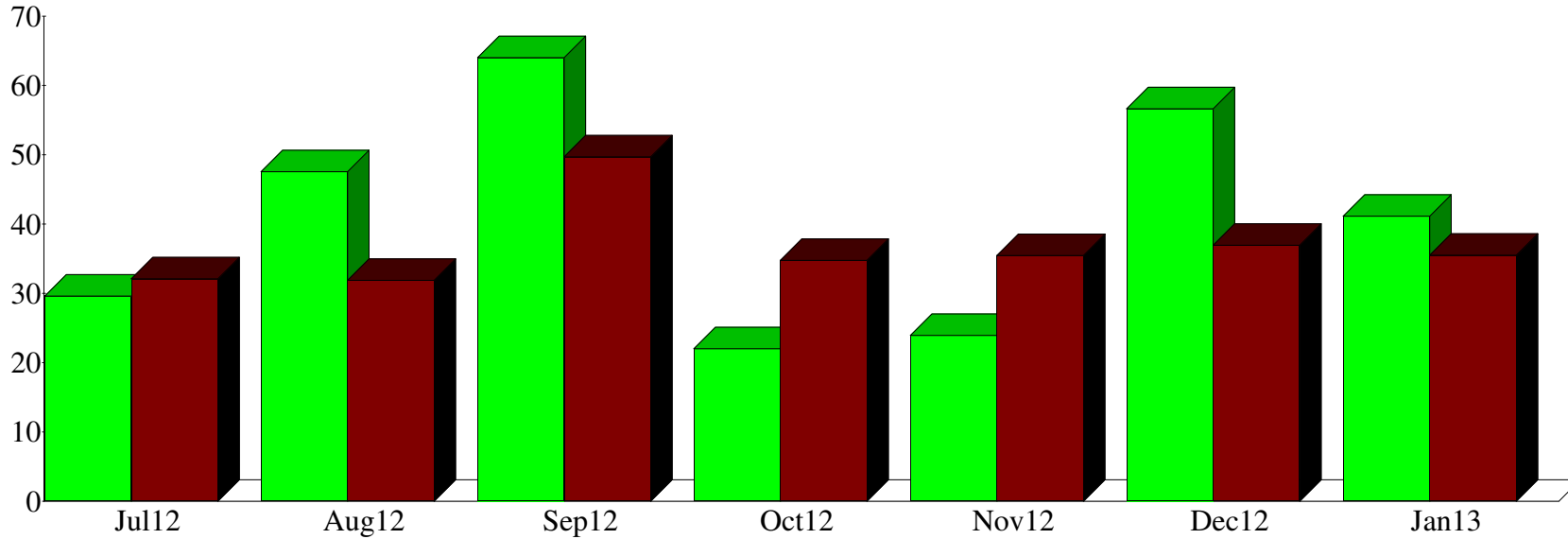


By Class

Income and Expense by Month
July 2012 through January 2013

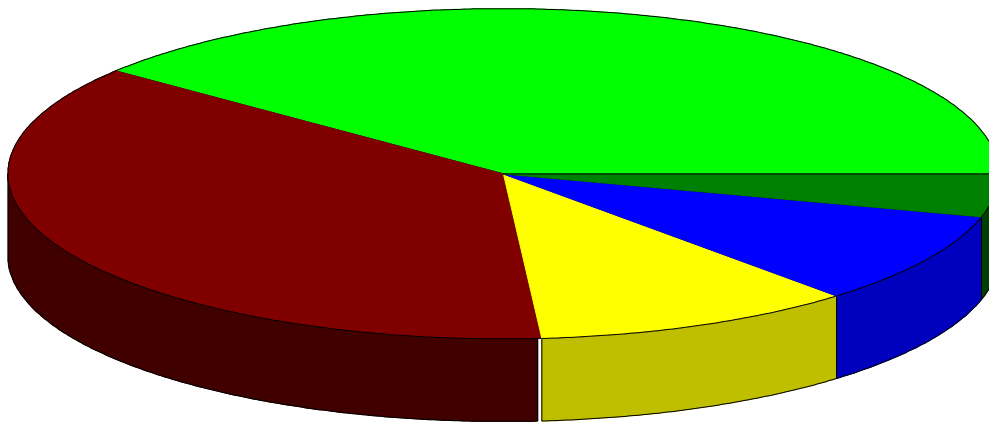


\$ in 1,000's



Expense Summary
July 2012 through January 2013

5300 · Supplies,Rep,Maint, Other Serv	%39.44
5000 · Compensation & Benefits	36.94
5100 · Contributions & Assessments	10.58
5400 · Utilities	9.10
5200 · Professional Fees & Insurance	3.96
Total	\$256,464.94



By Account

St. Patrick Parish-R. Ridge
Profit & Loss Budget vs. Actual
 July 2012 through January 2013

	Qtr 1	Qtr 2	Jan	TOTAL			
	Jul - Sep 12	Oct - Dec 12	Jan 13	Jul '12 - Jan 13	Budget	\$ Over Budget	% of Budget
Ordinary Income/Expense							
Income							
4000 · Offertory Income	60,572.28	94,074.50	18,584.00	173,230.78	166,613.00	6,617.78	103.97%
4100 · Other Regular Revenue	76,798.07	1,801.03	2,454.00	81,053.10	91,718.00	-10,664.90	88.37%
4200 · Extraordinary Income	3,855.25	6,777.32	20,125.00	30,757.57	17,800.00	12,957.57	172.8%
Total Income	141,225.60	102,652.85	41,163.00	285,041.45	276,131.00	8,910.45	103.23%
Expense							
5000 · Compensation & Benefits	39,238.68	42,874.05	12,613.79	94,726.52	87,831.00	6,895.52	107.85%
5100 · Contributions & Assessments	12,784.72	12,652.24	1,685.00	27,121.96	25,899.00	1,222.96	104.72%
5200 · Professional Fees & Insurance	4,106.71	4,653.84	1,392.23	10,152.78	11,603.00	-1,450.22	87.5%
5300 · Supplies,Rep,Maint, Other Serv	50,016.08	38,521.05	12,393.62	100,930.75	100,332.00	598.75	100.6%
5400 · Utilities	7,609.79	7,589.06	5,955.13	21,153.98	21,836.00	-682.02	96.88%
Total Expense	113,755.98	106,290.24	34,039.77	254,085.99	247,501.00	6,584.99	102.66%
Net Ordinary Income	27,469.62	-3,637.39	7,123.23	30,955.46	28,630.00	2,325.46	108.12%
Net Income	27,469.62	-3,637.39	7,123.23	30,955.46	28,630.00	2,325.46	108.12%

St. Patrick Parish-R. Ridge
Profit & Loss - Actual
 July 2012 through January 2013

	Jul 12	Aug 12	Sep 12	Oct 12	Nov 12	Dec 12	Jan 13	TOTAL
Ordinary Income/Expense								
Income								
4000 · Offertory Income	18,533.27	15,853.00	26,186.01	17,957.00	20,020.00	56,097.50	18,584.00	173,230.78
4100 · Other Regular Revenue	8,315.00	30,786.75	37,696.32	3,831.03	-2,510.00	480.00	2,454.00	81,053.10
4200 · Extraordinary Income	2,800.00	917.25	138.00	250.00	6,457.32	70.00	20,125.00	30,757.57
Total Income	29,648.27	47,557.00	64,020.33	22,038.03	23,967.32	56,647.50	41,163.00	285,041.45
Expense								
5000 · Compensation & Benefits	13,650.52	12,773.38	12,814.78	15,684.68	11,451.43	15,737.94	12,613.79	94,726.52
5100 · Contributions & Assessments	3,617.43	3,617.43	5,549.86	2,685.00	3,617.43	6,349.81	1,685.00	27,121.96
5200 · Professional Fees & Insurance	1,415.62	1,575.88	1,115.21	1,721.60	890.96	2,041.28	1,392.23	10,152.78
5300 · Supplies,Rep,Maint, Other Serv	11,494.52	10,765.19	27,756.37	12,479.26	17,122.81	8,918.98	12,393.62	100,930.75
5400 · Utilities	1,942.37	3,187.03	2,480.39	2,214.13	2,383.70	2,991.23	5,955.13	21,153.98
Total Expense	32,120.46	31,918.91	49,716.61	34,784.67	35,466.33	36,039.24	34,039.77	254,085.99
Net Ordinary Income	-2,472.19	15,638.09	14,303.72	-12,746.64	-11,499.01	20,608.26	7,123.23	30,955.46
Net Income	-2,472.19	15,638.09	14,303.72	-12,746.64	-11,499.01	20,608.26	7,123.23	30,955.46

St. Patrick Parish-R. Ridge
Balance Sheet
As of January 31, 2013

	Jan 31, 13
ASSETS	
Current Assets	
Checking/Savings	
1000 · Checking	64,707.64
1020 · Petty Cash	658.63
Total Checking/Savings	65,366.27
Accounts Receivable	
1100 · Accounts Receivable	23,587.29
Total Accounts Receivable	23,587.29
Total Current Assets	88,953.56
Fixed Assets	
1300 · Fixed Assets	2,894,162.17
Total Fixed Assets	2,894,162.17
TOTAL ASSETS	2,983,115.73
LIABILITIES & EQUITY	
Liabilities	
Current Liabilities	
Accounts Payable	
2000 · Accounts Payable	134,590.10
Total Accounts Payable	134,590.10
Other Current Liabilities	
2050 · Diocesan/Special Collections	731.00
2100 · Other Accrued Exp & Liabilities	7,191.00
2300 · Loans Payable	-70.69
Total Other Current Liabilities	7,851.31
Total Current Liabilities	142,441.41
Total Liabilities	142,441.41
Equity	
3000 · Net Assets	2,884,896.26
Net Income	30,955.46
Total Equity	2,840,674.32
TOTAL LIABILITIES & EQUITY	2,983,115.73